

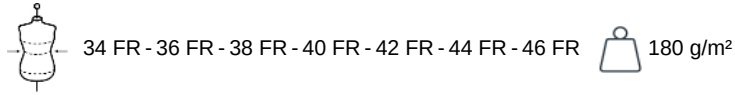
KARIBAN  
PREMIUM

PK750

## Ladies' city trousers

- Elegant trousers with a neat finish.
- Quality material for greater comfort.
- Part of suit, goes with PK6050 suit jacket.

50% polyester / 23% viscose / 22% wool / 5% elastane. Matching 100% polyester lining. Slim fit trousers. 2 side pockets. 2 back pockets with piping. Polyester twill pocket bag. Zip fastening with metal hook and protected inside by a strip of fabric (fly tab facing) held by a button for added comfort. Belt loops at the waist. Bias tape finish inside waistband. Pleat at front of leg. No brand label, only size tag for easy decoration access.



**No Label**

### More information

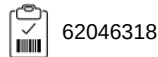
#### Logistic



#### Country of origin



#### Customs code



#### Washing instructions

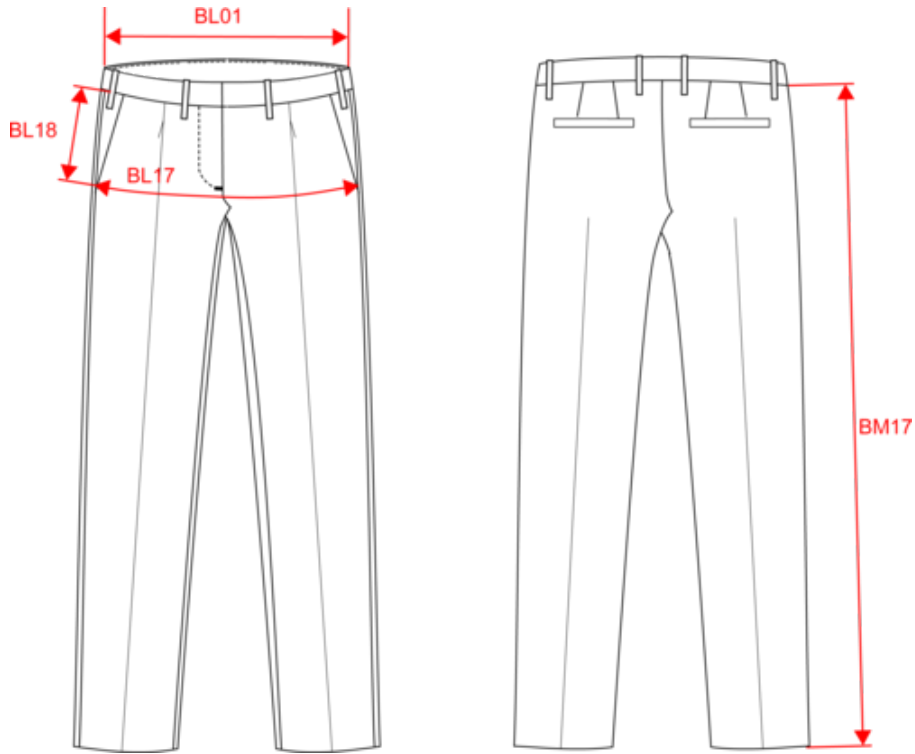


KARIBAN  
PREMIUM

PK750

Ladies' city trousers

Dimensions (cm)



Measurements in cm	34	36	38	40	42	44	46
BL01 - 1/2 waist width (buttoned up and front band over back band)	34.50	36.50	38.50	40.50	42.50	44.50	46.50
BL17 - 1/2 hip width (measured parallel to waistband)	45.50	47.50	49.50	51.50	53.50	55.50	57.50
BM17 - Side length (waistband excluded)	100.25	100.75	101.25	101.75	102.25	102.75	103.25

# KARIBAN PREMIUM

PK750

## Ladies' city trousers

### Colours information

#### Black

RVB : 35,35,37  
Pantone C : Black  
Pantone TCX : 19-4004TCX

#### Eclipse Navy

RVB : 41,45,58  
Pantone C : 532C  
Pantone TCX : 19-3923TCX

Logistic  1  20

Sizes	Width (cm)	Height (cm)	Length (cm)	Net weight (kg)	Gross weight (kg)	Pieces/Box	Pieces/Bundle
34 FR	40.00	30.00	60.00	9.00000	10.00000	20	0
36 FR	40.00	30.00	60.00	9.00000	10.00000	20	0
38 FR	40.00	30.00	60.00	9.00000	10.00000	20	0
40 FR	40.00	30.00	60.00	9.00000	10.00000	20	0
42 FR	40.00	30.00	60.00	9.00000	10.00000	20	0
44 FR	40.00	30.00	60.00	9.00000	10.00000	20	0
46 FR	40.00	30.00	60.00	9.00000	10.00000	20	0

	Taille fabricant	Pays-Bas	Italie	Portugal	Espagne	Royaume-Uni	Allemagne
Copie de []	32 FR	30 NL	36 IT	32 PT	32 ES	6 UK	30 DE
Copie de []	34 FR	32 NL	38 IT	34 PT	34 ES	8 UK	32 DE
Copie de []	36 FR	34 NL	40 IT	36 PT	36 ES	10 UK	34 DE
Copie de []	38 FR	36 NL	42 IT	38 PT	38 ES	12 UK	36 DE
Copie de []	40 FR	38 NL	44 IT	40 PT	40 ES	14 UK	38 DE
Copie de []	42 FR	40 NL	46 IT	42 PT	42 ES	16 UK	40 DE
Copie de []	44 FR	42 NL	48 IT	44 PT	44 ES	18 UK	42 DE
Copie de []	46 FR	44 NL	50 IT	46 PT	46 ES	20 UK	44 DE
Copie de []	48 FR	46 NL	52 IT	48 PT	48 ES	22 UK	46 DE
Copie de []	50 FR	48 NL	54 IT	50 PT	50 ES	24 UK	48 DE